



**2013 SHANNONS
MELBOURNE SPRING
CLASSIC AUCTION**

MONDAY 23RD SEPTEMBER - 7.00PM



1974 FERRARI DINO 246 GTS SPYDER



**1970 PLYMOUTH SUPERBIRD 440 SIX PACK
'ROADRUNNER' COUPE (LHD)**

321 WARRIGAL ROAD, CHELTENHAM, VIC



2013 SHANNONS MELBOURNE SPRING CLASSIC AUCTION

AUCTION - MONDAY 23RD SEPTEMBER - 7.00PM

321 Warrigal Road, Cheltenham, VIC.

VIEWING

All lots can be viewed from now until Monday 23rd September at the Shannons Showroom, 321 Warrigal Road, Cheltenham, VIC.

Monday-Friday - 8.00am - 6.00pm
Saturday - 9.00am - 5.00pm

MAIN VIEWING WEEKEND

Saturday 21st September - 9.00am - 5.00pm
Sunday 22nd September - 10.00am - 4.00pm

AUCTION SALE ENQUIRIES & INFORMATION

Christophe Boribon

National Auction Manager

T: (03) 8588 0866

M: 0413 567 308

E: Christophe_Boribon@shannons.com.au

Greg Hardy

Auctions Operations Leader

T: (03) 8588 0864

M: 0438 268 854

E: Greg_Hardy@shannons.com.au

Ryan Lednar

Auctions Sales Advisor

T: (03) 8588 0863

M: 0477 310 304

E: Ryan_Lednar@shannons.com.au

Kim Tobias

National Auction Co-ordinator

T: (03) 8588 0865

E: Kim_Tobias@shannons.com.au

Ross Johnston

Licensed Auctioneer

INTERNET shannons.com.au

ABSENTEE & TELEPHONE BIDS

To register as a phone or absentee bidder contact the Shannons Auction Team on (03) 8588 0809.

PLEASE NOTE: Registrations for phone or absentee bidding will not be accepted after 12 midday Monday 23rd September.

PAYMENT/SETTLEMENT ENQUIRIES: Kim Tobias (03) 8588 0865

BUYER FEE: An Administration Purchase Fee of \$500 (GST inc) per motor vehicle and \$250 (GST inc) per motorcycle is payable by all purchasers.

PLEASE NOTE: Payments made by credit card will be via Mastercard and VISA only.

2013 SHANNONS MELBOURNE SPRING CLASSIC AUCTION

LOT LIST - RUNNING ORDER OF AUCTION

LOT	YEAR	MODEL	GUIDING RANGE	
A		Model Cars x 5 - Selection of Batman Cars	\$100 -	200
B		Fog Lamps - Pair of Notek (British made)	\$200 -	400
C		Assorted Garage Tins and Oil Bottles x 21	\$250 -	500
D		Light Box - Castrol (70cm x 65cm)	\$300 -	500
1		1988 Citroen 2CV 'Beachcomber' Sedan	\$8,000 -	12,000
2		1949 Morris Minor Series MM Low-light 2 door Sedan	\$6,000 -	10,000
3		1948 Rover P3 Saloon	\$10,000 -	14,000
4		1958 Mercedes-Benz 220S Saloon	\$14,000 -	18,000
5		1968 Renault 8 Gordini R1135 Sedan	\$18,000 -	24,000
6		1966 Volkswagen 21 Window Kombi Microbus (LHD)	\$40,000 -	48,000
E		Model Cars x 13 - Selection of Corgi & Dinky Cars	\$150 -	300
F		Train Horn - c1920's Victorian 'Red Rattler' Train Horn	\$200 -	400
G		Michelin Man - Rare c1960's 14" high Hard Plastic Model with rotating head	\$400 -	600
H		U.S.A Parking Meter on Stand	\$800 -	1,000
7		1975 Holden HJ Kingswood 4.2 V8 Sedan	\$4,000 -	6,000
8		1979 Holden VB Commodore SL/E V8 Sedan	\$6,000 -	8,000
9		1967 Holden HR Special Sedan	\$8,000 -	11,000
10		1985 Harley-Davidson FXRS Low Glide 1340cc Motorcycle	\$15,000 -	18,000
11		1965 Ford Falcon XP Utility	\$18,000 -	24,000
12		1981 Holden HDT VC Commodore 'Brock' Sedan (No.242)	\$26,000 -	32,000
I		Print - 'Road to Ridler' Signed by Chip Foose (cars in print built by Chip Foose) (80cm x 83cm)	\$200 -	400
J		U.S.A Drive In Speakers on Stand	\$800 -	1,000
K		Petrol Pump - AS70 Wayne in Shell Livery (Restored with Reproduction Globe)	\$3,000 -	4,000
L		Number Plates - Victorian Numerical Number Plates - '1-112'	\$14,000 -	18,000
13		1964 Velo Solex 3800 Auto-cycle	\$2,000 -	3,500

■ Denotes lots with No Reserve.

Note: Pre-purchase reports available on most vehicles.

[Click here for full terms and conditions of auction.](#)

FOR DETAILED LOT DESCRIPTIONS VISIT: SHANNONS.COM.AU

2013 SHANNONS MELBOURNE SPRING CLASSIC AUCTION

LOT LIST - RUNNING ORDER OF AUCTION

LOT	YEAR	MODEL	GUIDING RANGE
14	1968	MG Midget Mk3 Roadster	\$7,000 - 10,000
15	1957	Heinkel Kabinkruiser Type 154 Micro Car	\$12,000 - 16,000
16	1988	Ducati 750 F1 'Santamonica' Motorcycle (Ltd Edition)	\$24,000 - 28,000
17	1934	Lagonda Rapier Sports Tourer	\$35,000 - 45,000
18	1968	Mercedes-Benz 280SL Convertible	\$55,000 - 70,000
M		Fog Horn - 1970's Tokyo Siren Co. in Wooden Storage Box	\$400 - 600
N		c1924 G.P Thick Fire Hydrant (150cm high)	\$600 - 800
O		Number Plates - Victorian Numerical Number Plates - '86-868'	\$10,000 - 15,000
P		Number Plates - Victorian Numerical Number Plates - '9-966'	\$14,000 - 18,000
19	1955	Ford Thunderbird Convertible (LHD)	\$28,000 - 34,000
20	1956	Cadillac 'Custom' 500ci 'Supercharged' Sedan (LHD)	\$26,000 - 32,000
21	1957	Lincoln Premier Convertible (LHD)	\$35,000 - 50,000
22	1966	Ford Mustang Fastback (LHD)	\$42,000 - 48,000
23	1956	Chevrolet Corvette Roadster (LHD)	\$58,000 - 66,000
24	1959	Cadillac Eldorado Biarritz Convertible (LHD)	\$120,000 - 140,000
Q		Model Plane - P47 Thunderbolt WW2 Fighter Plane complete with engine (160cm wingspan)	\$1,000 - 1,200
R		Model - Bugatti Type 37 Style Metal Sculpture Car (75cm long)	\$1,200 - 1,600
S		Number Plates - Victorian Numerical Number Plates - '38-726'	\$8,000 - 12,000
T		Number Plates - Victorian Numerical Number Plates - '4-555'	\$14,000 - 18,000
25	1951	Riley RMA 1.5litre Saloon	\$10,000 - 14,000
26	1934	Buick 8/40 Sedan	\$14,000 - 18,000
27	1955	Jaguar Mk VIII Saloon	\$14,000 - 18,000
28	1927	Chrysler 'Finer 70' Sports Roadster (RHD)	\$22,000 - 28,000
29	1960	Ford Fairlane 2 door Club Sedan (LHD)	\$26,000 - 32,000
30	1957	Ford Fairlane Skyliner 'Retractable' Convertible (LHD)	\$42,000 - 52,000
U		Enamel Sign - Mobiloil (French Postmount) (60cm x 40cm)	\$600 - 800
V		Model Plane - Christen Eagle II Bi-Plane (175cm wingspan)	\$1,000 - 1,200
W		Number Plates - Victorian Numerical Number Plates - '7-772'	\$14,000 - 18,000
X		Number Plates - Victorian Numerical Number Plates - '364'	\$40,000 - 55,000

2013 SHANNONS MELBOURNE SPRING CLASSIC AUCTION

LOT LIST - RUNNING ORDER OF AUCTION

LOT	YEAR	MODEL	GUIDING RANGE
31	2003	Harley-Davidson VRSCA V-Rod '100th Anniversary' Motorcycle	\$14,000 - 18,000
32	1951	Volkswagen Beetle 11B 'Split Window' Sedan	\$14,000 - 18,000
33	1967	Ford Mustang GT Fastback (LHD)	\$32,000 - 38,000
34	1978	Ford Falcon XC Cobra Coupe (No. 206)	\$60,000 - 70,000
Y		Number Plates - Victorian Numerical Number Plates - '509'	\$40,000 - 55,000
Z		Number Plates - Victorian Numerical Number Plates - '321'	\$45,000 - 60,000
35	c1957	Aston Martin DBR 2 'Tribute'	\$100,000 - 125,000
36	1970	Plymouth Superbird 440 Six Pack 'Roadrunner' Coupe (LHD)	\$185,000 - 205,000
37	1974	Ferrari Dino 246 GTS Spyder	\$260,000 - 285,000
AA		Number Plates - Victorian Numerical Number Plates - '33-666'	\$10,000 - 15,000
AB		Number Plates - Victorian Numerical Number Plates - '5-155'	\$14,000 - 18,000
AC		Number Plates - Victorian Numerical Number Plates - '896'	\$40,000 - 55,000
AD		Number Plates - Victorian Numerical Number Plates - '662'	\$40,000 - 55,000
38	1975	Holden HJ Statesman Caprice Sedan	\$4,000 - 7,000
39	1983	Holden WB Statesman Caprice Sedan	\$8,000 - 11,000
40	1986	Holden HDT VL Commodore 'Nitron' Sedan	\$7,000 - 9,000
41	1987	Mercedes-Benz 560SL Convertible	\$12,000 - 16,000
42	1991	Toyota Celica GT-Four Group A Rallye Coupe (Carlos Sainz No. 045)	\$12,000 - 16,000
43	1994	Maserati Bi-Turbo Spyder	\$10,000 - 15,000

■ Denotes lots with No Reserve.

Note: Pre-purchase reports available on most vehicles.

For full terms and conditions of auction enquire at bidder registration.



Shannons Auction eNews. Great news for buyers and sellers.

Signup now at: shannons.com.au/enews

FOR DETAILED LOT DESCRIPTIONS VISIT: SHANNONS.COM.AU



VEHICLES LOTS 1-43



LOT 1

1988 CITROEN 2CV 'BEACHCOMBER'
SEDAN

\$8 - 12,000

NO RESERVE

\$



LOT 2

1949 MORRIS MINOR SERIES MM
LOW-LIGHT 2 DOOR SEDAN

\$6 - 10,000

\$



LOT 3

1948 ROVER P3 SALOON

\$10 - 14,000

NO RESERVE

\$



LOT 5

1968 RENAULT 8 GORDINI R1135
SEDAN

\$18 - 24,000

\$



LOT 4 1958 MERCEDES-BENZ 220S SALOON

\$14 - 18,000

\$



LOT 6 1966 VOLKSWAGEN 21 -WINDOW MICROBUS (LHD)

\$40 - 48,000

\$



LOT 7

1975 HOLDEN HJ KINGSWOOD 4.2 V8
SEDAN

\$4 - 6,000

NO RESERVE

\$



LOT 8

1979 HOLDEN VB COMMODORE SL/E
V8 SEDAN

\$6 - 8,000

\$



LOT 11 1965 FORD FALCON XP UTILITY

\$18 - 24,000

\$



LOT 9

1967 HOLDEN HR SPECIAL SEDAN

\$8 - 11,000

\$



LOT 10

1985 HARLEY-DAVIDSON FXRS LOW
GLIDE 1340CC MOTORCYCLE

\$15 - 18,000

\$



LOT 12

1981 HOLDEN HDT VC COMMODORE
'BROCK' SEDAN (NO.242)

\$26 - 32,000

\$



LOT 13

1964 VELO SOLEX 3800 AUTO-CYCLE

NO RESERVE

\$2 - 3,500

\$



LOT 15 1957 HEINKEL KABINKRUISER TYPE 154 MICRO CAR

\$12 - 16,000

\$



LOT 18

1968 MERCEDES-BENZ 280SL CONVERTIBLE

\$55 - 70,000

\$



LOT 14

1968 MG MIDGET MK3 ROADSTER

NO RESERVE

\$7 - 10,000

\$



LOT 16

1988 DUCATI 750 F1 'SANTAMONICA'
MOTORCYCLE (LTD EDITION)

\$24 - 28,000

\$



LOT 17

1934 LAGONDA RAPIERT SPORTS TOURER

\$35 - 45,000

\$

FOR DETAILED LOT DESCRIPTIONS VISIT: SHANNONS.COM.AU



LOT 21 1957 LINCOLN PREMIER CONVERTIBLE (LHD)

\$35 - 50,000
\$



LOT 19

1955 FORD THUNDERBIRD
CONVERTIBLE (LHD)

\$28 - 34,000

NO RESERVE

\$



LOT 20

1956 CADILLAC 'CUSTOM' 500CI
'SUPERCHARGED' SEDAN (LHD)

\$26 - 32,000

\$



LOT 24

1959 CADILLAC ELDORADO BIARRITZ CONVERTIBLE (LHD)

\$120 - 140,000

\$



LOT 22

1966 FORD MUSTANG FASTBACK
(LHD)

\$42 - 48,000

\$



LOT 23

1956 CHEVROLET CORVETTE
ROADSTER (LHD)

\$58 - 66,000

\$



LOT 25

1951 RILEY RMA 1.5LITRE SALOON

NO RESERVE

\$10 - 14,000

\$



LOT 26

1934 BUICK 8/40 SEDAN

\$14 - 18,000

\$



NO RESERVE

\$14 - 18,000

\$

LOT 27 1955 JAGUAR MK VIII SALOON



LOT 28

1927 CHRYSLER 'FINER 70' SPORTS ROADSTER (RHD)

\$22 - 28,000

\$



LOT 29

1960 FORD FAIRLANE 2 DOOR CLUB SEDAN (LHD)

\$26 - 32,000

\$



LOT 30 1957 FORD FAIRLANE SKYLINER 'RETRACTABLE' CONVERTIBLE (LHD)

\$42 - 52,000

\$



LOT 31

2003 HARLEY-DAVIDSON VRSCA
V-ROD '100TH ANNIVERSARY'
MOTORCYCLE

\$14 - 18,000
\$



LOT 32

1951 VOLKSWAGEN BEETLE 11B
'SPLIT WINDOW' SEDAN **\$14 - 18,000**

NO RESERVE

\$



LOT 35 c1957 ASTON MARTIN DBR 2 'TRIBUTE'

\$100 - 125,000
\$



LOT 37

1974 FERRARI DINO 246 GTS SPYDER

\$260 - 285,000

\$



LOT 33

1967 FORD MUSTANG GT FASTBACK
(LHD)

\$32 - 38,000

\$



LOT 34

1978 FORD FALCON XC COBRA
COUPE (NO. 206)

\$60 - 70,000

\$



LOT 36 1970 PLYMOUTH SUPERBIRD 'ROADRUNNER'
440 SIX PACK COUPE (LHD)

\$185 - 205,000

\$



LOT 39 1983 HOLDEN WB STATESMAN CAPRICE SEDAN

\$8 - 11,000
\$



LOT 38
1975 HOLDEN HJ STATESMAN
CAPRICE SEDAN **\$4 - 7,000**

NO RESERVE

\$



LOT 40
1986 HOLDEN HDT VL COMMODORE
'NITRON' SEDAN **\$7 - 9,000**

\$



LOT 43 1994 MASERATI BI-TURBO SPYDER

NO RESERVE
\$10 - 15,000
\$



LOT 41
1987 MERCEDES-BENZ 560SL
CONVERTIBLE **\$12 - 16,000**

NO RESERVE

\$



LOT 42
1991 TOYOTA CELICA GT-FOUR
GROUP A RALLYE COUPE (CARLOS
SAINZ NO. 045) **\$12 - 16,000**

\$



MEMORABILIA



LOT A
 MODEL CARS X 5 - SELECTION OF
 BATMAN CARS **\$100 - 200**
 NO RESERVE \$



LOT B
 FOG LAMPS - PAIR OF NOTEK
 (BRITISH MADE) **\$200 - 400**
 NO RESERVE \$



LOT C
 ASSORTED GARAGE TINS AND OIL
 BOTTLES x 21 **\$250 - 500**
 NO RESERVE \$



LOT D
 LIGHT BOX - CASTROL (70cm x 65cm)
 NO RESERVE **\$300 - 500**
 \$



LOT E
 MODEL CARS x 13 - SELECTION OF
 CORGI & DINKY CARS **\$150 - 300**
 NO RESERVE \$



LOT F
 TRAIN HORN - c1920'S VICTORIAN
 'RED RATTLER' TRAIN HORN **\$200 - 400**
 NO RESERVE \$



LOT G

MICHELIN MAN - RARE c1960'S 14"
HIGH HARD PLASTIC MODEL WITH
ROTATING HEAD \$400 - 600
NO RESERVE \$



LOT H

U.S.A PARKING METER ON STAND
NO RESERVE \$800 - 1,000
\$



LOT I

PRINT - 'ROAD TO RIDLER' SIGNED BY
CHIP FOOSE (CARS IN PRINT BUILT BY
CHIP FOOSE) (80 x 83cm) \$200 - 400
NO RESERVE \$



LOT J

U.S.A DRIVE IN SPEAKERS ON STAND
NO RESERVE \$800 - 1,000
\$



LOT L

NUMBER PLATES - VICTORIAN
NUMERICAL NUMBER PLATES -
'1-112' \$14 - 18,000
\$



LOT M

FOG HORN - 1970'S TOKYO SIREN CO.
IN WOODEN STORAGE BOX \$400 - 600
NO RESERVE \$



LOT K

PETROL PUMP - AS70 WAYNE IN
SHELL LIVERY (RESTORED WITH
REPRODUCTION GLOBE) \$3 - 4,000
NO RESERVE \$

**LOT N**

c1924 G.P THICK FIRE HYDRANT
(150cm HIGH) **\$600 - 800**

NO RESERVE \$

**LOT O**

NUMBER PLATES - VICTORIAN
NUMERICAL NUMBER PLATES -
'86-868' **\$10 - 15,000**

NO RESERVE \$

**LOT P**

NUMBER PLATES - VICTORIAN
NUMERICAL NUMBER PLATES -
'9-966' **\$14 - 18,000**

NO RESERVE \$

**LOT Q**

MODEL PLANE - P47 THUNDERBOLT
WW2 FIGHTER PLANE COMPLETE
WITH ENGINE **\$1 - 1,200**

NO RESERVE \$

**LOT R**

MODEL - BUGATTI TYPE 37 STYLE
METAL SCULPTURE CAR (75cm
LONG) **\$1,200 - 1,600**

NO RESERVE \$

**LOT S**

NUMBER PLATES - VICTORIAN
NUMERICAL NUMBER PLATES -
'38-726' **\$8 - 12,000**

NO RESERVE \$

**LOT T**

NUMBER PLATES - VICTORIAN
NUMERICAL NUMBER PLATES -
'4-555' **\$14 - 18,000**

NO RESERVE \$

**LOT U**

ENAMEL SIGN - MOBILLOIL (FRENCH
POSTMOUNT) (60cm x 40cm)

NO RESERVE **\$600 - 800**

\$



LOT V

MODEL PLANE - CHRISTEN EAGLE II
BI-PLANE (175cm WINGSPAN)

NO RESERVE \$1 - 1,200
\$



LOT W

NUMBER PLATES - VICTORIAN
NUMERICAL NUMBER PLATES -
'7-772'

\$14 - 18,000
\$



LOT X

NUMBER PLATES - VICTORIAN
NUMERICAL NUMBER PLATES - '364'

\$40 - 55,000
\$



LOT Y

NUMBER PLATES - VICTORIAN
NUMERICAL NUMBER PLATES - '509'

\$40 - 55,000
\$



LOT Z

NUMBER PLATES - VICTORIAN
NUMERICAL NUMBER PLATES - '321'

\$45 - 60,000
\$



LOT AA

NUMBER PLATES - VICTORIAN
NUMERICAL NUMBER PLATES -
'33-666'

NO RESERVE \$10 - 15,000
\$



LOT AB

NUMBER PLATES - VICTORIAN
NUMERICAL NUMBER PLATES -
'5-155'

\$14 - 18,000
\$



LOT AC

NUMBER PLATES - VICTORIAN
NUMERICAL NUMBER PLATES - '896'

\$40 - 55,000
\$



LOT AD

NUMBER PLATES - VICTORIAN
NUMERICAL NUMBER PLATES - '662'

\$40 - 55,000

\$

AUCTIONS DOWN THE TRACK

SYDNEY

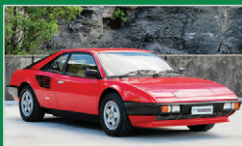
2013 SHANNONS SYDNEY SPRING CLASSIC AUCTION

Monday 21st October 2013
65 Reserve Road, St Leonards, NSW

[VIEW LOTS ONLINE NOW](#)



1969 Holden HT GTS Monaro
350 Coupe
Guiding Range \$80 - \$88,000



1985 Ferrari Mondial
Quattrovalvole Coupe
Guiding Range \$40 - \$46,000



1969 Mazda R100 Coupe
Guiding Range \$34 - \$40,000



1929 Harley-Davidson JDH
1200cc (Two Cam)
Guiding Range \$23 - \$28,000



1941 Harley-Davidson U
Model 1200cc Motorcycle
Guiding Range \$16 - \$21,000



1956 Triumph Tiger 100
500cc Motorcycle
Guiding Range \$8 - \$12,000

MELBOURNE

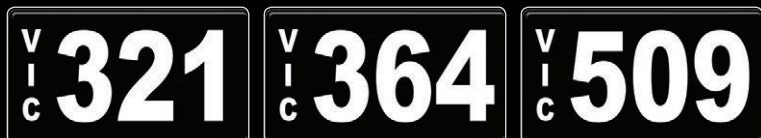
2013 SHANNONS MELBOURNE SUMMER CLASSIC AUCTION

Monday 2nd December 2013
321 Warrigal Road, Cheltenham, VIC

[ENTRIES INVITED](#)



FEATURING 13 VICTORIAN NUMERICAL
NUMBER PLATES



THE ABOVE IMAGES ARE FOR REPRESENTATION PURPOSES ONLY.
THE PLATES MAY DIFFER FROM THE IMAGE.