



2013 SHANNONS SYDNEY CUSTOM & COLLECTABLE AUCTION AT MOTOREX

SUNDAY 21ST JULY - 3.00PM



1971 CHRYSLER VH CHARGER R/T E38 COUPE



1974 MAZDA RX3 'GROUP C' COUPE RACE CAR



NO RESERVE

1972 HOLDEN LJ TORANA GTR XU-1 'BATHURST' SEDAN

**SYDNEY SHOWGROUND, SYDNEY OLYMPIC
PARK, HOMEBUSH BAY NSW**



2013 SHANNONS SYDNEY CUSTOM & COLLECTABLE AUCTION AT MOTOREX

AUCTION - SUNDAY 21ST JULY - 3.00PM

The Dome, Main Exhibition Halls, Sydney Showground,
Sydney Olympic Park, Homebush Bay, NSW

VIEWING

PRIOR TO MOTOREX

All lots can be viewed from now until Thursday 18th
July at the Shannons Showroom.

Main viewing weekend

Saturday 13th July - 9.00am-4.00pm & Sunday 14th July - 10.00am-4.00pm
65 Reserve Road, St Leonards, New South Wales.

AT MOTOREX

Friday 19th July - 5.00pm - 9.00pm, Saturday 20th July - 10.00am-7.00pm
Sunday 21st July - 10.00am-3.00pm

ENTRY INTO MOTOREX

Adults: \$35 (Free entry for registered bidder only upon presentation of a Shannons
Bidding Card after 1pm on Sunday)

Children (5-14yrs): \$15. Children under 5yrs: Free. Pensioners: \$15

AUCTION SALE ENQUIRIES & INFORMATION

Ian Clayton

Auction Administration Officer

T: (02) 8019 4180

M: 0411 162 110

E: Ian_Clayton@shannons.com.au

Stuart Roberts

Auction Sales Advisor

T: (02) 8019 4179

M: 0477 304 338

E: Stuart_Roberts@shannons.com.au

Christophe Boribon

National Auction Manager

T: (03) 8588 0866

M: 0413 567 308

E: Christophe_Boribon@shannons.com.au

Ross Johnston

Licensed Auctioneer

INTERNET shannons.com.au

ABSENTEE & TELEPHONE BIDS

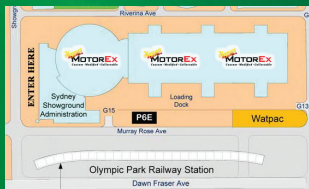
To register as a phone or absentee bidder contact the Shannons Auction Team on
(02) 8019 4179/4180.

PLEASE NOTE: Registrations for phone or absentee bidding will not be accepted after
7pm Saturday 20th July.

PAYMENT/SETTLEMENT ENQUIRIES

Ian Clayton 0411 162 110 / (02) 8019 4180.

PLEASE NOTE: Payments made by credit card will be via Mastercard and VISA only.



2013 SHANNONS SYDNEY CUSTOM & COLLECTABLE AUCTION AT MOTOREX

LOT LIST - RUNNING ORDER OF AUCTION

LOT	YEAR	MODEL	GUIDING RANGE
A		Number Plates x 54 - USA and Canadian Number and Novelty Plates mounted on 3 boards	\$400 - 600
B		Enamel Sign - Shell Huiles Double Sided Post Mount (60 x 45cm)	\$300 - 500
C		c1927 Harley-Davidson 27B 350cc (OHV) Peashooter Motorcycle	\$14,000 - 18,000
D		Number Plates - NSW Numerical Motorcycle Number Plate '77'	\$45,000 - 55,000
E		c1946 Harley-Davidson U Model 1200cc Motorcycle (Project)	\$6,000 - 10,000
1		1955 Morris Minor 1000 Sedan (Modified)	\$8,000 - 12,000
2		1970 Mercedes-Benz 250 Sedan	\$5,000 - 8,000
3		1988 Jaguar XJS V12 Coupe	\$14,000 - 18,000
4		1972 MGB Mk II Roadster	\$14,000 - 18,000
5		1963 Daimler 2.5 V8 Saloon	\$15,000 - 18,000
6		1992 Mercedes-Benz 500 SL Convertible	\$18,000 - 24,000
F		c1967 Aermacchi Ala Verde 250cc 'Café Racer' Motorcycle	\$6,000 - 9,000
G		c1929 Harley-Davidson F Model 1000cc (i.o.e.) Solo Motorcycle	\$16,000 - 19,000
H		Number Plates - NSW Numerical Number Plates '598'	\$72,000 - 78,000
I		Framed Signed Photos of Ferrari's 1951 Maiden Grand Prix Victory Limited Edition 14/20 (63 x 103cm)	\$800 - 1,000
7		1962 Holden EK Utility	\$12,000 - 16,000
8		1953 Holden '50-2106' FX Utility	\$28,000 - 34,000
9		1968 Chevrolet Camaro RS 327 Convertible (RHD)	\$52,000 - 58,000
10		1968 Ford Mustang 'Shelby GT500' Replica Fastback (LHD)	\$55,000 - 65,000
J		Enamel Sign - Mobiloil Gargoyle (55 x 36cm)	\$300 - 500
K		Acrylic Sign - Shell embossed (176 x 176cm)	\$200 - 400
L		Framed Signed Photo of 'The Snake Pit' signed by Carroll Shelby (71 x 65cm)	\$700 - 900
M		Number Plates - NSW Numerical Number Plates '4800'	\$42,000 - 48,000
N		c1926 Harley-Davidson 26B 350cc (Pup) Solo Motorcycle	\$10,000 - 15,000
11		1968 Fiat 500F Bambino 2 Door Sedan	\$10,000 - 14,000
12		1959 Borgward Isabella Coupe	\$22,000 - 26,000
13		1968 BMW 2002 'Track Prepared Coupe'	\$22,000 - 28,000

■ Denotes lots with No Reserve.

FOR DETAILED LOT DESCRIPTIONS VISIT SHANNONS.COM.AU

2013 SHANNONS SYDNEY CUSTOM & COLLECTABLE AUCTION AT MOTOREX

LOT LIST - RUNNING ORDER OF AUCTION

LOT	YEAR	MODEL	GUIDING RANGE
14	1978	Ferrari Dino 308 GT4 Coupe	\$42,000 - 48,000
15	2002	c1950s De Joux Maserati Special (Replica)	\$40,000 - 60,000
16	1959	MGA Twin Cam Roadster	\$42,000 - 48,000
O		Enamel Sign - Dunlop Stock Round (Diameter 61cm)	\$300 - 600
P		c1942 Harley-Davidson WLA 750cc Chopper Solo Motorcycle (Project)	\$5,000 - 8,000
Q		Number Plates - NSW Numerical Number Plates '1942'	\$42,000 - 48,000
R		c1981 Harley-Davidson FLHTC Tour Glide Classic 1340cc Motorcycle	\$10,000 - 14,000
S		Petrol Pump - Wayne Electric in Golden Fleece Livery with Reproduction Ram (Restored)	\$3,000 - 4,500
17	1965	Chrysler Valiant AP6 Regal Sedan	\$8,000 - 12,000
18	1971	Chrysler VH Valiant R/T 2 Barrel Coupe	\$42,000 - 48,000
19	1976	Holden LX Torana SL/R 5000 (Replica) Sedan	\$25,000 - 30,000
20	1971	Chrysler VH Charger R/T E38 Coupe	\$80,000 - 90,000
21	1968	Holden HK Monaro GTS 327 Coupe	\$90,000 - 100,000
T		c1963 Harley-Davidson Topper 165cc Scooter	\$5,000 - 8,000
U	1967	BMW R50 Motorcycle	\$8,000 - 12,000
V		Petrol Pump - c1940s Gilbarco CM Single Electric Pump in Caltex Livery (Restored with Reproduction Globe)	\$3,000 - 4,500
W		Number Plates - NSW Numerical Number Plates '8111'	\$42,000 - 46,000
X		c1942 Harley-Davidson WLA 750cc Motorcycle	\$12,000 - 15,000
Y		Petrol Pump - Wayne Electric in Shell Livery with Reproduction Globe (Restored)	\$3,000 - 4,500
22		1993 Daimler Double Six 6.0L Saloon	\$10,000 - 15,000
23	1964	Mercedes-Benz 230SL Convertible	\$62,000 - 68,000
24	1928	Rolls-Royce Phantom 1 Tourer (Project)	\$55,000 - 70,000
25	1958	Jaguar XK150 Drop Head Coupe	\$75,000 - 90,000
26		c1953 Jaguar C-Type (Recreation)	\$170,000 - 190,000
27	1920	Vauxhall E-Type 30/98 Velox Tourer	\$250,000 - 290,000
Z		Enamel Sign - Dunlop (183 x 46cm)	\$700 - 900

2013 SHANNONS SYDNEY CUSTOM & COLLECTABLE AUCTION AT MOTOREX

LOT LIST - RUNNING ORDER OF AUCTION

LOT	YEAR	MODEL	GUIDING RANGE
AA		Autocycle - Motobecane 3800 Velosolex 49cc Autocycle	\$2,500 - 3,500
AB		Petrol Pump - c1920s-30s G & B Manual Pump in Texaco Livery (Restored)	\$4,000 - 5,500
AC		Number Plates - NSW Numerical Number Plates '86500'	\$18,000 - 24,000
AD		c1957 Harley-Davidson Sportster 883cc Motorcycle	\$8,000 - 12,000
28		1971 Ford Capri V6 GT Coupe	\$18,000 - 24,000
29		1965 Ford Mustang 'K Code' Convertible (LHD)	\$50,000 - 60,000
30		1972 Holden LJ Torana GTR XU-1 'Bathurst' Sedan	\$65,000 - 75,000
31		1974 Mazda RX3 'Group C' Coupe Race Car	\$80,000 - 100,000
32		1975 Ford XB GT Falcon 'Group C' Coupe Race Car	\$330,000 - 360,000

■ Denotes lots with No Reserve.

Note: Pre-purchase reports available on most vehicles. For full terms and conditions of auction enquire at bidder registration.



JULY 19TH, 20TH & 21ST 2013
SYDNEY OLYMPIC PARK



VEHICLES LOTS 1-32



LOT 1
1955 MORRIS MINOR 1000 SEDAN
(MODIFIED) **\$8 - 12,000**
NO RESERVE \$



LOT 2
1970 MERCEDES-BENZ 250 SEDAN
NO RESERVE **\$5 - 8,000**
\$



LOT 3
1988 JAGUAR XJS V12 COUPE
\$14 - 18,000
\$



LOT 4
1972 MGB MK II ROADSTER
\$14 - 18,000
\$



LOT 5 1963 DAIMLER 2.5 V8 SALOON
\$15 - 18,000
\$



LOT 6

1992 MERCEDES-BENZ 500 SL CONVERTIBLE

\$18 - 24,000

\$



LOT 7

1962 HOLDEN EK UTILITY

\$12 - 16,000

\$



LOT 9

1968 CHEVROLET CAMARO RS 327
CONVERTIBLE (RHD)

\$52 - 58,000

\$



LOT 8

1953 HOLDEN '50-2106' FX UTILITY

\$28 - 34,000

\$



LOT 10

1968 FORD MUSTANG 'SHELBY
GT500' REPLICA FASTBACK (LHD)

\$55 - 65,000

\$



LOT 11

1968 FIAT 500F BAMBINO 2 DOOR
SEDAN

\$10 - 14,000

NO RESERVE

\$



LOT 13

1968 BMW 2002 'TRACK PREPARED
COUPE'

\$22 - 28,000

\$



LOT 14

1978 FERRARI DINO 308 GT4 COUPE

\$42 - 48,000

\$



LOT 12 1959 BORGWARD ISABELLA COUPE

\$22 - 26,000

\$



LOT 16
1959 MGA TWIN CAM ROADSTER
\$42 - 48,000
\$



LOT 15
2002 c1950S DE JOUX MASERATI
SPECIAL (REPLICA) \$40 - 60,000
\$



LOT 17
1965 CHRYSLER VALIANT AP6 REGAL
SEDAN \$8 - 12,000
\$



LOT 18 1971 CHRYSLER VH VALIANT R/T 2 BARREL COUPE \$42- 48,000
\$



LOT 19

1976 HOLDEN LX TORANA SL/R 5000
(REPLICA) SEDAN

\$25 - 30,000

\$



LOT 22

1993 DAIMLER DOUBLE SIX 6.0LT
SALOON

\$10 - 15,000

\$

NO RESERVE



LOT 20 1971 CHRYSLER VH CHARGER R/T E38 COUPE

\$80 - 90,000

\$



LOT 21
1968 HOLDEN HK MONARO GTS 327 COUPE
\$90 - 100,000
\$



LOT 23
1964 MERCEDES-BENZ 230SL
CONVERTIBLE
\$62 - 68,000
\$

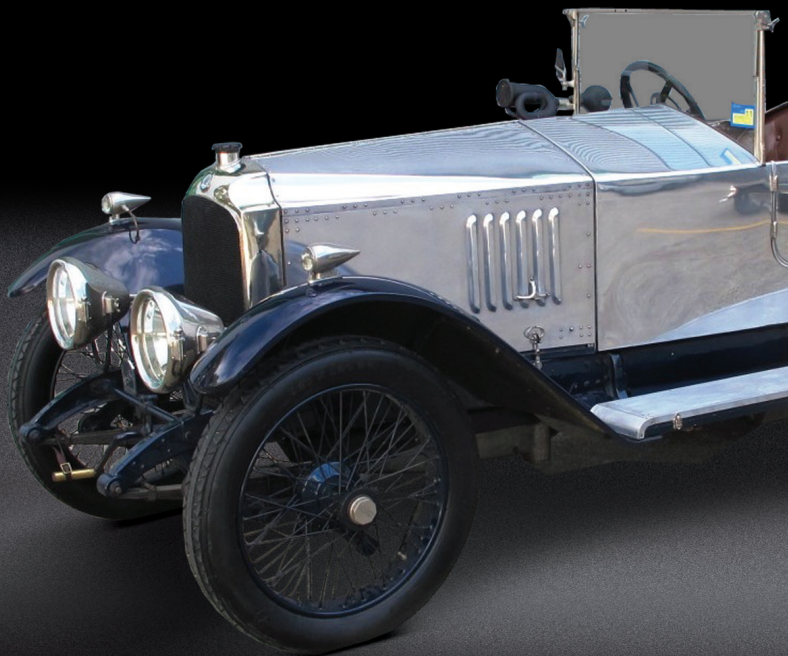


LOT 24
1928 ROLLS-ROYCE PHANTOM 1
TOURER (PROJECT)
\$55 - 70,000
\$



LOT 25 1958 JAGUAR XK150 DROP HEAD COUPE
\$75- 90,000
\$

FOR DETAILED LOT DESCRIPTIONS VISIT SHANNONS.COM.AU



LOT 26

c1953 JAGUAR C-TYPE (RECREATION)

\$170 - 190,000

\$



LOT 28

1971 FORD CAPRI V6 GT COUPE

NO RESERVE

\$18 - 24,000

\$



LOT 31 1974 MAZDA RX3 'GROUP C' COUPE RACE CAR

\$80 - 100,000

\$



LOT 27

1920 VAUXHALL E-TYPE 30/98 VELOX TOURER

\$250 - 290,000

\$



LOT 29

1965 FORD MUSTANG 'K CODE'
CONVERTIBLE (LHD)

\$50 - 60,000

\$



LOT 30

1972 HOLDEN LJ TORANA GTR XU-1
'BATHURST' SEDAN

\$65 - 75,000

NO RESERVE

\$



LOT 32

1975 FORD XB GT FALCON 'GROUP C' COUPE RACE CAR

\$330 - 360,000

\$



MOTORCYCLES



LOT C

c1927 HARLEY-DAVIDSON 27B 350cc
(OHV) PEASHOOTER MOTORCYCLE

NO RESERVE

\$14 - 18,000

\$



LOT E

c1946 HARLEY-DAVIDSON U MODEL
1200cc MOTORCYCLE (PROJECT)

NO RESERVE

\$6 - 10,000

\$



LOT F

c1967 AERMACCHI ALA VERDE 250cc
'CAFÉ RACER' MOTORCYCLE

NO RESERVE

\$6 - 9,000

\$



LOT G

c1929 HARLEY-DAVIDSON F MODEL
1000cc (I.O.E.) SOLO MOTORCYCLE

NO RESERVE

\$16 - 19,000

\$



LOT N

c1926 HARLEY-DAVIDSON 26B 350cc
(PUP) SOLO MOTORCYCLE

NO RESERVE

\$10 - 15,000

\$



LOT P

c1942 HARLEY-DAVIDSON WLA
750cc CHOPPER SOLO MOTORCYCLE
(PROJECT)

NO RESERVE

\$5 - 8,000

\$



LOT R

c1981 HARLEY-DAVIDSON FLHTC
TOUR GLIDE CLASSIC 1340cc
MOTORCYCLE \$10 - 14,000
NO RESERVE \$



LOT T

c1963 HARLEY-DAVIDSON TOPPER
165cc SCOOTER \$5 - 8,000
NO RESERVE \$



LOT U

1967 BMW R50 MOTORCYCLE
\$8 - 12,000
\$



LOT X

c1942 HARLEY-DAVIDSON WLA 750cc
MOTORCYCLE \$12 - 15,000
NO RESERVE \$



LOT AA

AUTOCYCLE - MOTOBECANE 3800
VELOSOLEX 49CC AUTOCYCLE
NO RESERVE \$2,500 - 3,500
\$



LOT AD

c1957 HARLEY-DAVIDSON
SPORTSTER 883cc MOTORCYCLE
NO RESERVE \$8 - 12,000
\$



MEMORABILIA



LOT A

NUMBER PLATES X 54 - USA AND CANADIAN NUMBER AND NOVELTY PLATES

\$400 - 600

NO RESERVE

\$



LOT B

ENAMEL SIGN - SHELL HUILES DOUBLE SIDED POST MOUNT (60 x 45cm)

\$300 - 500

NO RESERVE

\$

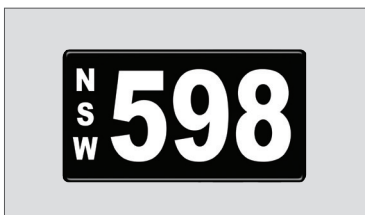


LOT D

NUMBER PLATES - NSW NUMERICAL MOTORCYCLE NUMBER PLATE '77'

\$45 - 55,000

\$



LOT H

NUMBER PLATES - NSW NUMERICAL NUMBER PLATES '598'

\$72 - 78,000

\$



LOT I

FRAMED SIGNED PHOTOS OF FERRARI'S 1951 MAIDEN GRAND PRIX VICTORY (63 x 103cm)

\$800 - 1,000

NO RESERVE

\$



LOT J

ENAMEL SIGN - MOBILLOIL GARGOYLE (55 x 36cm)

\$300 - 500

NO RESERVE

\$



LOT K

ACRYLIC SIGN - SHELL EMBOSSED
(176 x 176cm) **\$200 - 400**

NO RESERVE \$



LOT L

FRAMED SIGNED PHOTO OF 'THE
SNAKE PIT' SIGNED BY CARROLL
SHELBY (71 x 65cm) **\$700 - 900**

NO RESERVE \$



LOT M

NUMBER PLATES - NSW NUMERICAL
NUMBER PLATES '4800' **\$42 - 48,000**

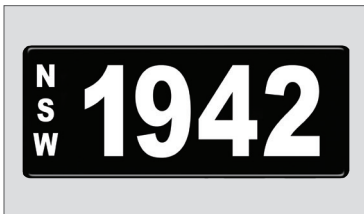
\$



LOT O

ENAMEL SIGN - DUNLOP STOCK
ROUND (DIAMETER 61cm) **\$300 - 600**

NO RESERVE \$



LOT Q

NUMBER PLATES - NSW NUMERICAL
NUMBER PLATES '1942' **\$42 - 48,000**

\$



LOT W

NUMBER PLATES - NSW NUMERICAL
NUMBER PLATES '8111'

\$42 - 46,000

\$



LOT S

PETROL PUMP -
WAYNE ELECTRIC
IN GOLDEN FLEECE
LIVERY WITH
REPRODUCTION RAM
(RESTORED)

\$3 - 4,500

\$



LOT V

PETROL PUMP -
c1940S GILBARCO
CM SINGLE ELECTRIC
PUMP IN CALTEX
LIVERY (RESTORED
WITH REPRODUCTION
GLOBE) **\$3 - 4,500**

\$

A rectangular enamel sign with a yellow background and the word "DUNLOP" in bold, black, sans-serif capital letters.

LOT Z

ENAMEL SIGN - DUNLOP (183 x 46cm)

NO RESERVE

\$700 - 900

\$

A black rectangular number plate with "NSW" in white vertical text on the left and "86500" in large white numerical digits on the right.

LOT AC

NUMBER PLATES - NSW NUMERICAL

NUMBER PLATES '86500'

\$18 - 24,000

\$



LOT Y

PETROL PUMP - WAYNE ELECTRIC IN SHELL LIVERY WITH REPRODUCTION GLOBE (RESTORED)

NO RESERVE

\$3 - 4,500

\$



LOT AB

PETROL PUMP - c1920S-30S G & B MANUAL PUMP IN TEXACO LIVERY (RESTORED)

NO RESERVE

\$4 - 5,500

\$

AUCTIONS DOWN THE TRACK

MELBOURNE

2013 SHANNONS MELBOURNE SPRING CLASSIC AUCTION

Monday 23rd September 2013
321 Warrigal Road, Cheltenham, VIC

ENTRIES INVITED

SYDNEY

2013 SHANNONS SYDNEY SPRING CLASSIC AUCTION

Monday 21st October, 2013
65 Reserve Road, St Leonards, NSW

ENTRIES INVITED



SHANNONS AUCTION eNEWS

AUCTION eNEWS

Shannons Auction eNews.

Great news for buyers and sellers.

Sign up now and get the new online auction catalogue delivered straight to your email!

Compatible for mobiles & tablets.

shannons.com.au/enews





FEATURING TEN 'NO RESERVE'
HARLEY-DAVIDSON MOTORCYCLES
FROM LARGE PRIVATE COLLECTION

